

FOR INDUSTRY, TRADE AND RESIDENTIAL BUILDINGS



DN 15 TO DN 100

**Powerful valves for the industry,
trade and residential buildings.
We also tackle major tasks.**



Innovative solutions for smart people

SYR valves – proven quality for major operations

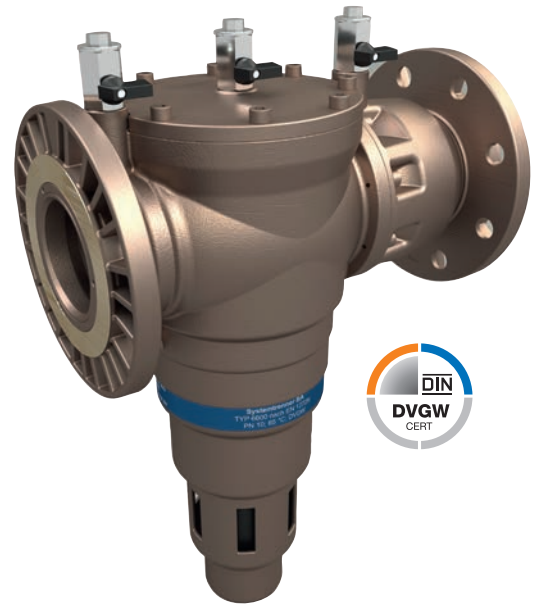
High-quality filter technology, backflow preventers for the safety and protection of drinking water as well as powerful pressure reducing valves that reliably protect supply systems from damage as a result from increased pressures – our SYR6 quality proves its worth when it comes to large industry, commercial or residential buildings!

**ALL VALVES
UP TO DN 100**

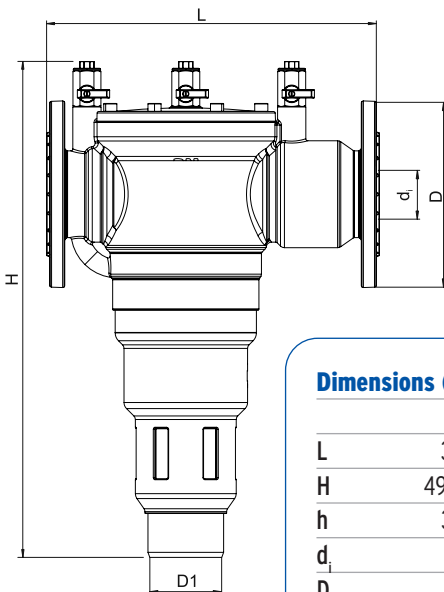
Flanged BA Backflow Preventer type BA 6600

The SYR Flanged Backflow Preventer type BA prevents backflow of non-potable water or other fluids into the potable water supply system, thus protecting the potable water quality up to fluid category 4 according to EN 1717.

SYR's Flanged Backflow Preventer type BA is equipped with the easy-to-service cartridge technology. The integrated strainer protects the control unit from contamination, thus guaranteeing its long and safe operation. The pressure compensating piston equalizes fluctuations in upstream pressures and prevents dripping. Body made of gunmetal.



- High flow rate
- Protection of the potable water quality up to fluid category 4 according to EN 1717
- Complies with the EN 12729 standard for backflow preventers
- 3-zone-system with controllable upstream, intermediate and downstream pressure zone
- Pressure compensating piston equalizes fluctuations in upstream pressures
- Integrated pre-filter
- Service-friendly cartridge system
- DN 65, 80 and 100



	Dimensions (mm) Nominal size (DN)		
	65	80	100
L	330	350	350
H	496,5	513,5	537,5
h	365	370	382,5
d _i	65	80	100
D	185	200	220
D1	75	75	75

Technical specifications

max. service temperature	65 °C
max. inlet pressure	10 bar
Medium	drinking water
Flow rate	
DN 65	85 m ³ /h at Δp 1,5 bar
DN 80	110 m ³ /h at Δp 1,5 bar
DN 100	125 m ³ /h at Δp 1,5 bar
Serial no.	
DN 65	6600.65.000
DN 80	6600.80.000
DN 100	6600.100.000

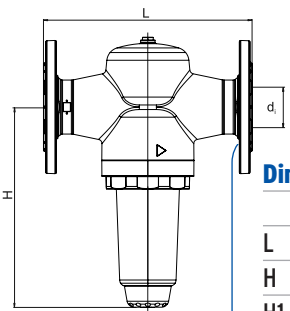
SYR professional tips

Our SYR differential pressure measuring kit is perfect to verify the correct functioning of backflow preventers type BA according to EN 1717 and facilitates mandatory measures according to EN 806 part 5.

Gunmetal Flange-type Pressure Reducing Valve 6247

High-quality pressure reducing valve for flange connection according to EN 1567, with strainer, adjustable outlet pressure between 1.5 and 6 bar. Factory set to 4 bar. Body made of gunmetal, lead-free.

- Integrated strainer
- Adjustable outlet pressure between 1.5 and 6 bar
- For flange connection according to EN 1567
- DN 65, 80 and 100



Dimension (mm) Nominal size (DN)

	65	80	100
L	290	310	350
H	278	278	278
H1	185	200	220
Distance between the bores in mm	145	160	180
Bores	4	8	8

Technical specifications

max. operating pressure	16 bar
max. operating temperature	30 °C
Inlet pressure	1,5 - 6 bar (factory set: 4 bar)
Medium	water, drinking water, compressed air, neutral non-adhesive fluids, neutral gases
Flow rate	
DN 65	24 m ³ /h at Δp 1,1 bar
DN 80	36 m ³ /h at Δp 1,1 bar
DN 100	56 m ³ /h at Δp 1,1 bar
Serial no.	
DN 65	6247.65.000
DN 80	6247.80.000
DN 100	647.100.000

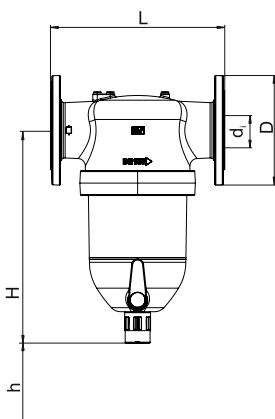
Gunmetal flange-type filter 6380 Backwash filter

High-quality backwash filter in accordance with EN 13443-1 and DIN 19628 for flange connection. Meets the requirements specified in DIN 1988. Body made of gunmetal.

- Rotatable lower part for flexible positioning of the backwash knob
- New backwash technique
- Automatic backwash system + differential pressure switch can be retrofitted
- Compact size
- Body made of robust gunmetal
- DN 65, 80 and 100



Differential pressure switch (must be used together with automatic backwash system RSA)



Dimensions (mm) Nominal size (DN)

	65	80	100
L	290	310	350
H	428	428	428
h	min. 310 mm		
D	185	200	220
d _i	67	80	100
Distance between the bores in mm	145	160	180
Bores	4	8	8

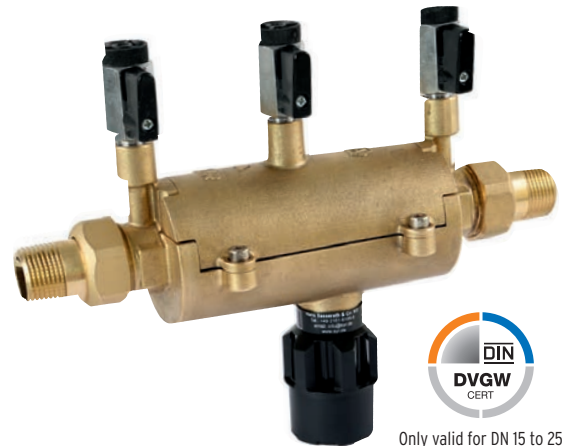
Technical specifications

min. operating pressure	2 bar
max. operating pressure	16 bar
max. operating temperature	30 °C
Medium	drinking water
Flow rate	
DN 65	46 m ³ /h at Δp 0,2 bar
DN 80	55 m ³ /h at Δp 0,2 bar
DN 100	58 m ³ /h at Δp 0,2 bar
DN 65	70 m ³ /h at Δp 0,5 bar
DN 80	85 m ³ /h at Δp 0,5 bar
DN 100	92 m ³ /h at Δp 0,5 bar
Lower mesh width	90 μm
Upper mesh width	125 μm
Serial no.	
DN 65	6380.65.010
DN 80	6380.80.010
DN 100	6380.100.010

Backflow Preventer BA 6610 in-line LF

Thanks to the **service-friendly cartridge system** of the Backflow Preventer BA 6610 in-line LF, the mandatory service of backflow preventers once per year is no longer a chore because the strainer and the differential-pressure controlled cartridge form one module. Simply loosen the screws, remove the casing cover, remove the integral cartridge and insert the new, service-friendly cartridge.

The Backflow Preventer BA 6610 in-line LF protects potable water against non-potable water according to EN 1717 up to and including fluid category 4. Installation upstream of apparatuses and draw-off points. 3-zone-system composed of a controllable upstream, intermediate and downstream pressure zone. A pressure compensating piston equalizes fluctuations in upstream pressures and prevents dripping. **Lead-free casing.**



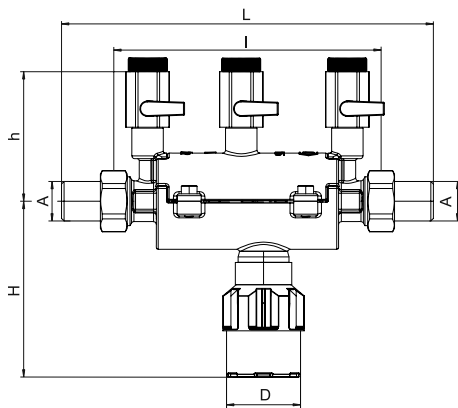
Only valid for DN 15 to 25

UP TO DN 50

- Lead-free casing (LF)
- Service-friendly in-line cartridge system
- Compact installation size
- Protection of drinking water quality up to fluid category 4 according to EN 1717
- 3-zone-system with controllable upstream, intermediate and downstream pressure zone
- Pressure compensating piston equalizes fluctuations in upstream pressures
- DN 15 to DN 50

Technical specifications

min. operating pressure	2 bar
max. operating pressure	10 bar
max. operating temperature	65 °C
Medium	drinking water
Flow rate	
DN 15	2,9 m ³ /h at Δp 1,5 bar
DN 20	5,1 m ³ /h at Δp 1,5 bar
DN 25	7,9 m ³ /h at Δp 1,5 bar
DN 32	13,0 m ³ /h at Δp 1,5 bar
DN 40	20,3 m ³ /h at Δp 1,5 bar
DN 50	31,8 m ³ /h at Δp 1,5 bar
ABP-no.	
DN 15 - 25	P-IX 1685/1
Serial no.	
DN 15	6610.15.000
DN 20	6610.20.000
DN 25	6610.25.000
DN 32	6610.32.000
DN 40	6610.40.000
DN 50	6610.50.000



Dimensions (mm) Nominal size (DN)

	15	20	25	32	40	50
A	R 1/2"	R 3/4"	R 1"	1 1/4"	1 1/2"	2"
L	201	240	248	350	354	375
I	145	178	178	260	260	260
H	95	95	95	115,4	115,4	115,4
h	70	79	79	96	96	96
D	40	40	40	40	40	40

SYR professional tip #1

Our SYR differential pressure measuring kit is perfect to verify the correct functioning of backflow preventers type BA according to EN 1717 and facilitates mandatory measures according to EN 806 part 5.

SYR professional tip #2

With the Backflow Preventer BA 6610 in-line, checking, servicing or replacing the integral cartridge are possible without special maintenance tools – simply loosen the screws and remove the casing cover.