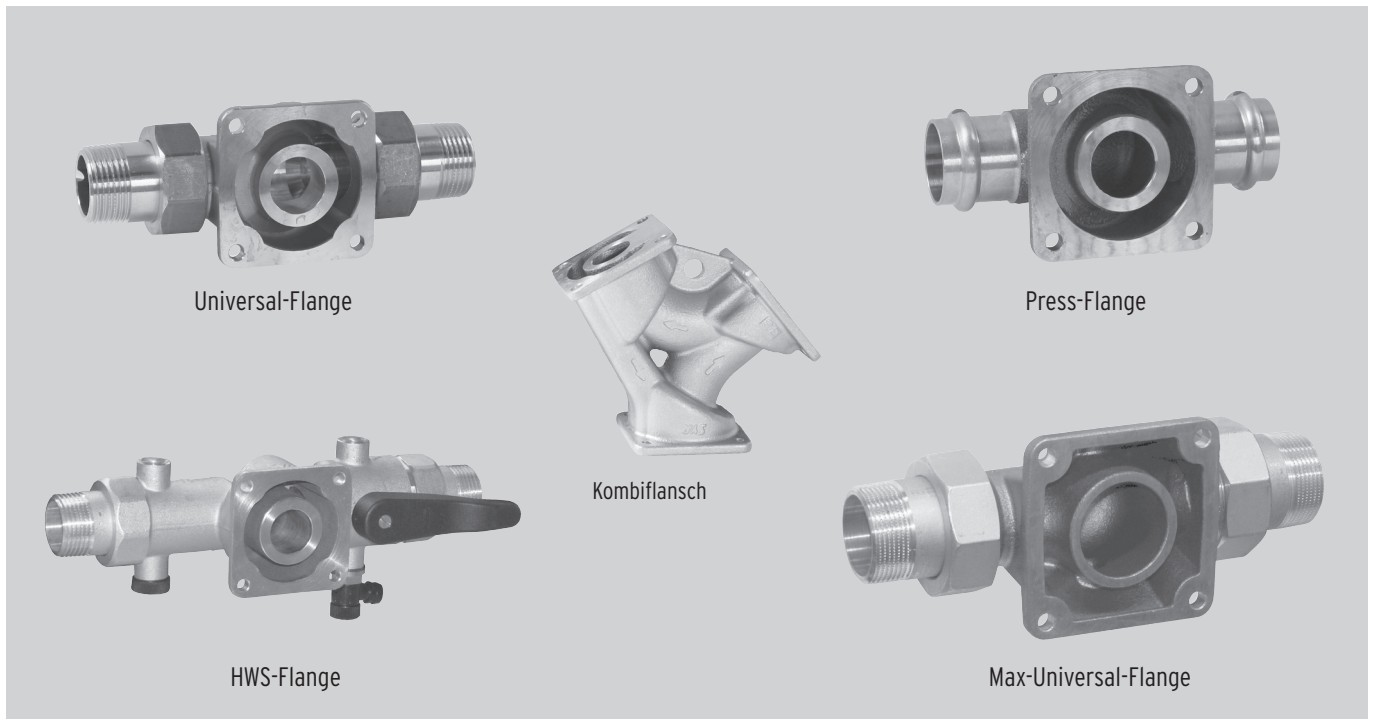


# Flange programme 2315

Connection modules for all Drufi and MultiSafe types

2



## Field of application

The extensive SYR flange programme is used to mount the Drufi filter series and the various MultiSafe types at the point of entry of domestic

water installations. All flanges can be mounted in horizontal and vertical pipes.

## Design

The **universal flange** is the classical connection flange; it is available in the sizes DN 20, 25 and 32. The standard universal flange which is equipped with threaded unions on both sides (external threads) is also available with soldered unions on demand. All unions are made with a gasket. The **HWS-flange 2000** turns the Drufi into a complete domestic water unit. It includes a check valve, an isolating valve with a drain device and a test port to verify functionality of the check valve. In

addition, it has two connections for inlet and outlet pressure manometers. The **compression flange** is equipped with compression fittings on both sides. The **max universal flange** consists of low-lead dezincification resistant gunmetal alloy and is laid out for Drufi+ max, Domestic water union max filter and the LEX-T Unit in the sizes DN 32, 40 and 50. The **Combination flange** allows the combination of two valves (for example, Drufi + and IT 3000) on one of the other flanges and is used in confined spaces.

### Materials

The universal flange is made of a high-quality, low-lead brass alloy and the universal flange with additional outlets, the HWS-flange, the compression

flange and the max universal flange are made of a low-lead, dezincification resistant gunmetal alloy.

### Installation

Install all SYR-connection flanges directly behind the water metering system. Installation is possible in vertical and horizontal pipes, however the HWS-

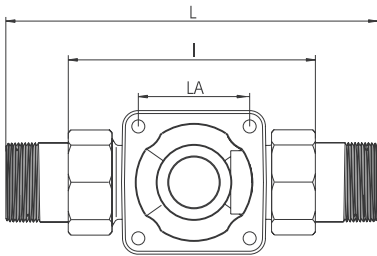
flange 2000 shall only be mounted in vertical pipes with the direction of flow from below upwards.

Thoroughly flush the pipe prior to installation. Install the suitable flange under consideration of the mounting position (see arrow on the body). Install the device directly behind the water metering system in potable water installations without

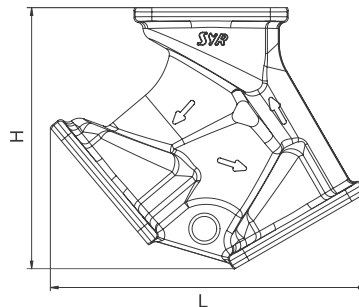
applying stresses. Ensure that the main axis of the flange is vertical for the subsequent connection of the valve.

### Technical data

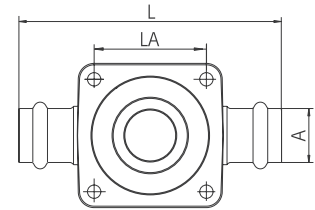
Operating pressure:	max 16 bar
Operating temperature:	max. 30 °C
Mounting position:	any
Fluids:	potable water
Serial numbers:	2315...Type Universal + Compression 2000...Type HWS



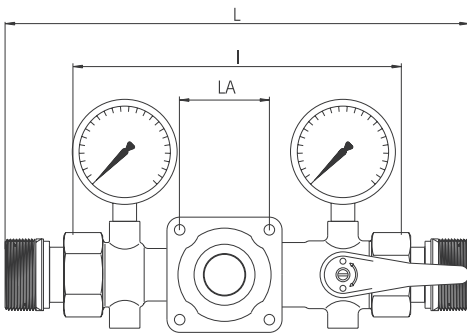
Universal Flange



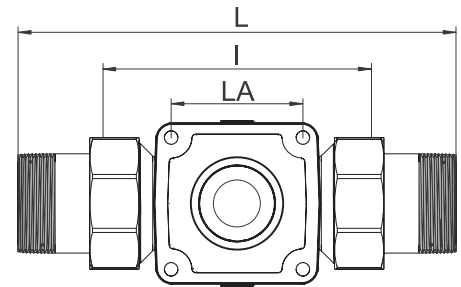
Combination Flange



Compression Flange



HWS Flange 2000 (Manometer: Accessories)



Max Universal Flansch

Nominal size			DN 20	DN 25	DN 32	DN 40	DN 50	
		A	-	R 3/4"	R 1"	R 1 1/4"	R 1 1/2"	R 2"
<b>Dimensions</b>	Universal Flange	I (mm)	-	90	100	105	-	-
		L (mm)	-	158	174	191	-	-
		LA (mm)		53	53	53		
	HWS Flange 2000	I (mm)	-	180	180	180	-	-
		L (mm)	-	254	254	274	-	-
		LA (mm)		53	53	53		
	Press Flange	L (mm)	-	124	128	128	-	-
		LA (mm)		53	53	53		
	Max-Universal Flange	I (mm)	-	-	-	130	150	150
		L (mm)	-	-	-	220	240	265
		LA (mm)		-	-	80	80	80
	Combination flange	L (mm)	141	-	-	-	-	-
		H (mm)	117	-	-	-	-	-

**Accessories**

for HWS-Flansch 2000: Manometer 0-10 bar: 2000.00.906  
 Manometer 0-25 bar: 2000.00.907

for max universal flange: Manometer 0-25 bar: 2000.00.907



Components / Order numbers

①  
**Unions**  
incl. captive nut,  
middle piece and seal  
DN 20 Gewinde 0812.20.900  
DN 25 Gewinde 0812.25.900  
DN 32 Gewinde 0812.32.900

**Universal Flange**

②  
**Unions**  
incl. captive nut,  
middle piece and seal  
DN 20 Gewinde 0814.20.900  
DN 25 Gewinde 0812.25.900  
DN 32 Gewinde 0816.32.900

③  
**Manometer (Accessories)**  
2000.00.906 (10 bar)  
2000.00.907 (25 bar)

④  
**Check valve**  
2000.00.910

**HWS- Flange 2000**

⑤  
**Manometer plug**  
0828.08.000

⑥  
**Drain plug**  
2315.00.920

⑦  
**Isolating valve**  
2000.00.917

⑧  
**Unions**  
incl. captive nut,  
middle piece and seal  
DN 32 Gewinde 0812.32.900  
DN 40 Gewinde 0812.40.900  
DN 50 Gewinde 0812.50.900

**Max Universal Flange**

⑨  
**Manometer plug**  
0828.08.000