

WE KEEP SMART THINGS SIMPLE.



"I just love the noticeably soft water of my LEX Plus 10 Connect Water Softener. No limescale in sight – a wonderful feeling for skin and hair!"

YOUR SYR PLUS
Selection of four models of the LEX Plus 10 Connect Water Softener range

Noticeable **softness.**
Visible **beauty.**

LEX Plus 10 Water Softeners from the SYR CONNECT System.

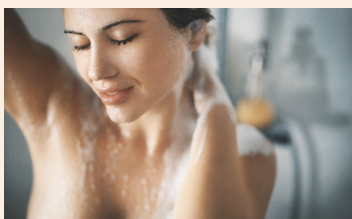


More comfort and greater safety

Living without limescale and with a new sense of well-being

Soft water simply means greater quality of life: it pampers your skin, feels good and makes your hair shiny. Savour the full aroma of your tea and coffee. Your laundry and towels will be perfectly soft. Your valves and installations will no longer be subject to limescale – and have a longer life. And hideous lime deposits will be a thing of the past.

“There was a water softening installation at our holiday hotel – and I wanted that soft water feeling for my home, too! Our new **LEX Plus 10 Connect** meets all my requirements.”



Soft water pampers the skin, feels good and makes your hair shiny.



Perfectly soft and snugly towels and laundry. Tea and coffee taste better.



Shiny valves and tiles with no lime deposits. And lower energy costs.



SYR Water Softeners LEX Plus 10 Connect For tangible beauty and softness and visible shine.

Soft water is tangible and increases the well-being. Softened water is essential for healthy skin and shiny hair. Even the most expensive skin and hair care products cannot be effective if the water contains excessive lime levels: combined with soap, salts develop that cannot dissolve and build up a surface layer that prevents the active ingredients from entering your skin and hair. Indulge in the beauty secret of soft water directly on your skin with the SYR Water Softener LEX Plus 10 Connect.

Soft water – indulge your senses

The quality of drinking water does not depend on its hardness level – yet whether the drinking water is soft or hard does make a big difference in our daily lives.

Apart from the positive effect of soft water on our skin, coffee or tea often have a fuller, more aromatic taste to them if they are prepared with soft water – to savour their full aroma!

Lime deposits reduce the life of hot water appliances, and increase costs: a limescale layer of a mere millimetre can increase energy consumption by approximately 20 percent. The pipes of your drinking water installation become more and more clogged - with the risk of complete blockage.

Opt for the DVGW-tested SYR LEX Plus 10 Connect Water Softeners. And enjoy the wonderful feeling of noticeably soft water!



Soft water makes you economise on shampoo and skin care products and can help reduce irritated skin.



No use for laundry softeners: soft water for snuggly laundry!



Plants, too, love soft water – no lime deposits that would inhibit their growth.

Soft water: your wish is our command

Efficient descaling and modern internet technology

The LEX Plus 10 Connect is a fully automatic single-tank water softener with the proven ion exchanging method that replaces calcium and magnesium ions causing water hardness by sodium ions and thus guarantees the permanent, reliable and economical supply of soft water. If the installation is connected with the internet via Wi-Fi, you can use all the features with the free SYR App.



Online monitoring. If the LEX Plus 10 Connect is connected with the internet, it can be controlled via the SYR App. In case of failure, the installation will notify you via text message or e-mail.



The touchscreen colour display of the LEX Plus 10 Connect is protected by a glass cover. In normal operations, the display indicates the water pressure, the current salt consumption, and the range of the salt filling. If you touch the display, the salt tank will be illuminated.



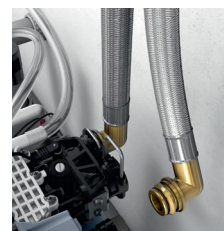
Efficient descaling, economical consumption: the LEX Plus 10 Connect Water Softener operates with modern salt-saving technology. If the storage salt tank runs low, the LEX communicates this via text message or e-mail.



With the external blending and bypass unit of the LEX Plus 10 Connect, setting the desired water hardness is child's play: pull out the blending valve a little, turn it until the display shows the desired water hardness and push down the blending valve again – done.



The torsion-free plug connections are simply mounted on the blending unit and fastened with clamps – done. Tubes cannot twist – for effective leak prevention.





“Our LEX Plus 10 Connect on the internet – via the SYR App, I can retrieve the information on how much salt is still stored, I can check inlet and outlet water hardness and have statistics displayed.”

Semi-automatic, easy commissioning.

The LEX Plus 10 Connect Water Softener is mounted and commissioned by a qualified installer. The installation is easy to control via the modern glass touchscreen. The menu is self-explanatory and will guide you through the necessary steps.

The SYR soft water guarantee

If more water is consumed and the soft water capacity is running low, the intelligent smart control of the LEX Plus 10 Connect sees to early regeneration. Thus, untreated or simply partially softened water is avoided, with no loss of convenience and comfort!

Double flange connection for dual power

With the double flange connection (available as accessory), two LEX Plus 10 Connect installations can be mounted in combination, thus doubling performance and capacity.



Serial no.
Double flange connection
DN 32 1500.32.000
DN 40 1500.40.000
DN 50 1500.50.000



Mounting and commissioning



The SYR soft water comfort range

Soft water with a system – LEX Plus 10 Connect S and SL

Both soft water comfort models complement our LEX Plus 10 Connect range. These LEX installations, too, form part of the SYR CONNECT system and can be connected to the internet via Wi-Fi. With the free SYR App, the respective LEX can be monitored and controlled.



COMPACT MODEL

LEX Plus 10 S
with sandwich-type
connecting fitting
Serial no. 1500.01.011



The space-saving soft water system LEX Plus 10 S Connect and its sandwich-type connecting fitting with a blending valve make it easy to connect the DRUFI drinking water filter, too.

If a potable water filter from the DRUFI system is already mounted in the pipe, the LEX Plus 10 S Connect is the perfect solution.

Installation made easy: remove the DRUFI, mount the connecting fitting with the integrated blending unit onto the flange, remount the DRUFI and connect the hoses of the LEX Plus 10 S Connect. The result: a perfectly functional and compact filter and softening unit – SYR innovative solutions for smart people.



COMFORT MODEL
LEX Plus 10 SL with sandwich-type connecting fitting with leakage detection and protection system
Serial no. 1500.01.012



The soft water comfort model LEX Plus 10 SL Connect combines efficient water softening with a sandwich-type connecting fitting equipped with a leakage detection and protection system. It also features a flange connection for the DRUFI.

The smart water softener will see to the continuous supply of soft water and also protects you against costly consequences of water damage.

Your benefit with the SYR Connect system: the interaction of a leakage detection and protection system and a water softener. If your LEX Plus 10 SL Connect Water Softener requires water for regeneration, it will notify the integrated leakage detection and protection system that will release the appropriate amount - no need for you to intervene.



YOUR SYR PLUS

Received the Smart Home Award: SYR CONNECT

Smart Potable Water Installations by SYR

A competent system for smart comfort

SYR CONNECT sees to perfectly smart safety for domestic installations. The valves are monitored and controlled with the SYR App, covering the areas of leakage detection and protection, water treatment, hygiene control and heating system monitoring. And thanks to the internet-based swarm intelligence (ISI), they can be connected across all areas and centrally monitored.

Leakage detection and protection as a stand-alone solution or within a network system: Reliable protection against costly water damage, frost damage and the consequences of excessively high/low humidity levels. Determines water hardness.

Hygiene control for large-scale objects: The flushing station detects stagnating water and temperatures that promote bacteria growth. It triggers a hygiene flushing where all the pipes will be flushed with fresh water.



Water softening systems for descaling and noticeably soft water without limescale deposits: As a compact comfort installation, as 'S' with flange connection for the DRUF1 drinking water filter, as 'SL' with leakage detection and protection or as a powerful twin tank installation.

Heating system monitoring, automatic filling and leakage detection and protection: Fulfils the manufacturer's instructions for filling water for heating systems and VDI 2035. Connecting the SYR cartridge for heating water conditioning possible.

Feel free to contact us.

No contact in the field and you are looking for a certified SYR soft water specialist? Go to

www.weichwasser.info > kontakt
Fill in the form and send it to us. We will be happy to name a qualified SYR installer.